



Air Conditioning Systems

SLZ-KF PRODUCT FLYER



SLZ-KF Series

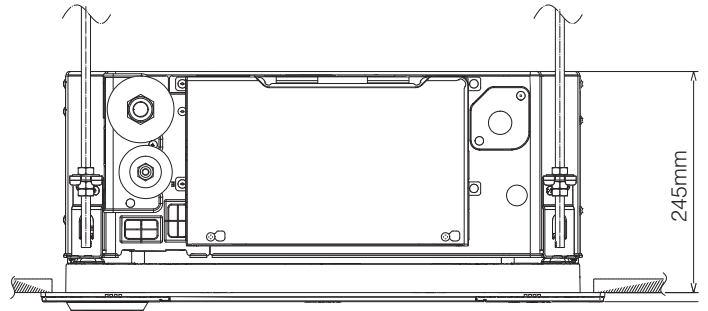
Mitsubishi Electric's new SLZ-KF Series cassette unit provides the smart solution to comfort and efficient air conditioning.



New Design

The straight-line form introduced has resulted in a beautiful square design. Its high affinity ensures the ability to blend in seamlessly with any interior. The indoor unit is an ideal match for office and retail.

The height enables fitting into narrow ceiling spaces. This reduced height profile allows for easy installation in restricted ceiling spaces and allows the potential for higher ceilings, for a more spacious occupancy.



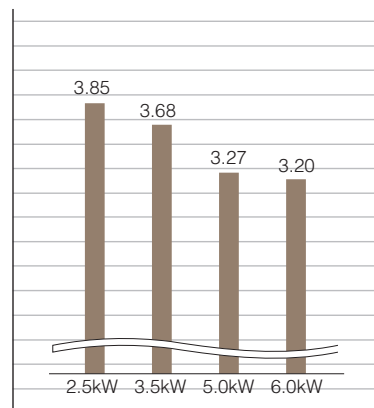
New Line-Up

The new SLZ-KF models have been introduced with a diverse selection that provides the best solution for air conditioned comfort.

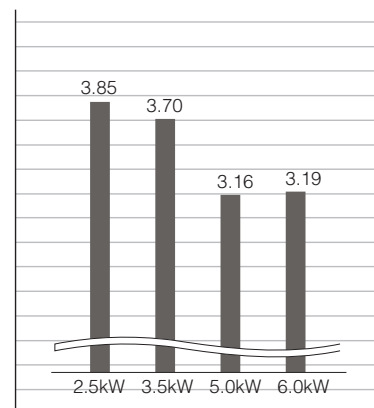
	2.5kW	3.5kW	5.0kW	6.0kW*
SLZ-KA	✓		✓	
NEW SLZ-KF	✓	✓	✓	✓

*SLZ-KF60 is for single connection only.

SLZ-KF | EER



SLZ-KF | COP



Energy-Saving Performance

The SLZ-KF series ensures optimum performance for the end user.

The improvements offer higher energy efficiencies across the range.

Easy Installation

Temporary Suspension Hook

The structure of the panel has been revised and is now equipped with a temporary hanging hook. This has improved work efficiency during panel installation.

No Need to Remove Screws

Installation is possible without removing the screws from the control box - simply loosen them. This reduces the risk of losing screws.

3D i-See Sensor

Presence Detection

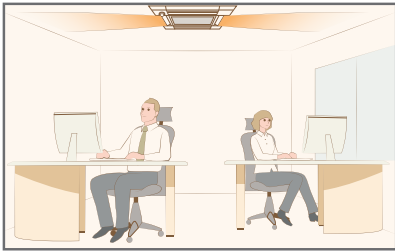
A total of eight sensors rotate a full 360° in 3-minute intervals. In addition to detecting occupancy, our original algorithm also detects body temperature.

Detects People's Position

With the 3D i-See Sensor, it is possible to choose "Direct Airflow" or "Indirect Airflow" for each vane. When the sensor detects people, it automatically adjusts the angle of the vane, enabling independent air conditioning for the comfort of each person.

Direct/Indirect Setting

Direct settings allow for airflow directly onto occupants for rapid cooling. When set to "Indirect Airflow", uncomfortable drafty-feeling is substantially reduced.



Seasonal Airflow

During heating mode, once the pre-set temperature is reached, the system switches to circulator operation and blows the air horizontally. This provides smart heating by circulating the hot air at ceiling level towards people's heights.

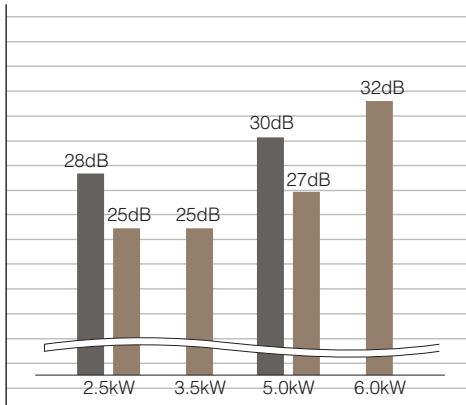


Quietness

The sound level has been reduced thanks to the introduction of a 3D turbo fan, for quieter and more comfortable air conditioning.

SLZ-KF | Cooling
SPL [Lo]

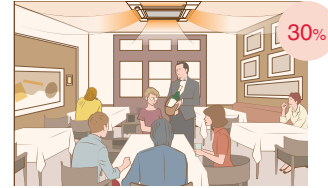
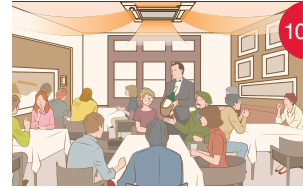
■ Previous model
■ New model



Detects Occupancy of People: Energy-Saving Mode

The 3D i-See Sensor detects the occupancy of people in the room and then calculates the occupancy rate based on the maximum recorded number of people during operation. Energy savings is improved by switching power to energy-saving mode or turning to Auto-Off.

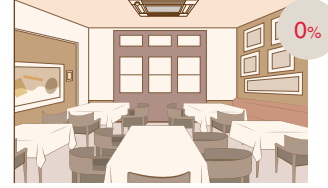
Room occupancy energy save mode



No occupancy energy save mode



No occupancy Auto-Off mode



Airflow Control

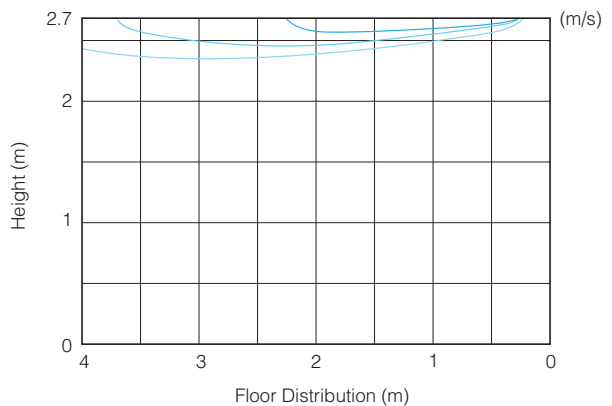
Horizontal Airflow

The new airflow control substantially reduces uncomfortable draft with the introduction of a horizontal airflow that spreads across the ceiling. This is the ideal airflow for offices and restaurants.

[Airflow distribution]

SLZ-KF60VA3

Flow angle, cooling at 20°C (ceiling height at 2.7m)



SPECIFICATIONS

Model		SLZ-KF							
Indoor Unit		SLZ-KF25VA3		SLZ-KF35VA3		SLZ-KF50VA3		SLZKF-60VA3	
Outdoor Unit		SUZ-KA25VAD2		SUZ-KA35VAD2		SUZ-KA50VAD2		SUZ-KA60VAD2	
Function		Cooling	Heating	Cooling	Heating	Cooling	Heating	Cooling	Heating
Capacity (Min-Max.)	kW	2.5 (1.5-3.2)	3.0 (1.3-4.5)	3.5 (1.4-3.9)	4.0 (1.7-5.0)	5.0 (2.3-5.2)	5.0 (1.7-6.5)	5.6 (2.3-6.5)	6.0 (2.5-7.4)
Input	kW	0.65	0.78	0.95	1.08	1.53	1.58	1.75	1.88
Rated EER/COP		3.85	3.85	3.68	3.70	3.27	3.16	3.20	3.19
Rated AEER/ACOP		3.73	3.75	3.61	3.63	3.21	3.11	3.16	3.15
AEER/ACOP (Part-Load %)		-	-	4.94	4.92	4.48	4.43	4.41	4.47
Power Supply		Single-Phase, 50Hz, 230V							
Airflow (Lo-Mid-Hi)	L/S	108-125-142		108-150-192		117-150-192		125-192-217	
Sound Pressure Level	dB	25-28-31		25-33-39		27-34-39		32-40-43	
Dimensions <Panel>	Height	mm 245 <10>		mm 245 <10>		mm 245 <10>		mm 245 <10>	
	Width	mm 570 <625>		mm 570 <625>		mm 570 <625>		mm 570 <625>	
	Depth	mm 570 <625>		mm 570 <625>		mm 570 <625>		mm 570 <625>	
Weight <Panel>	kg	15 <3>		15 <3>		15 <3>		15 <3>	

PANEL & CORNER PANEL				
		With Signal Receiver	With 3D i-See Sensor	With NEW Wireless Remote Controller
Panel	SLP-2FA			
	SLP-2FAL	✓		
	SLP-2FAE		✓	
	SLP-2FALE	✓	✓	
	SLP-2FALM	✓		✓
	SLP-2FALME	✓	✓	✓
Corner Panel	PAR-SF9FA-E	✓		
	PAC-SF1ME-E		✓	

CONTROLLER	
Wired Remote Controller	PAR-33MAA
	PAC-YT52CRA
	PAR-CT01MAA
Wireless Remote Controller	PAR-SL97A-E

OPTIONAL PARTS	
System Control Interface	MAC-333IF-E
Wi-Fi Interface	MAC-568IF-E
Remote Sensor	PAC-SE41TS-E
Remote On/Off Adapter	PAC-SE55RA-E
Connector Cable for Remote Display	PAC-SA88HA-E



MitsubishiElectric.com.au

Printed October 2018

The specifications and information in this flyer are subject to change without notice. Colours depicted in this flyer may vary slightly. Images are for illustrational purposes only.